

Fxsolar Ground Terrace V

FXSOLAR Ground Terrace V

FXSOLAR Ground Terrace V (GT V) is a ground solar mounting system further developed from GT IV and mainly applicable for the site required for low-medium ground clearance. GT V is characterized both for its adjustability and simplified structure. Compared with GT IV, GT V removes the front support, which reduces cost and saves installation time while maintaining reasonable structure strength.



FXSOLAR Ground Terrace V

Technical Parameters

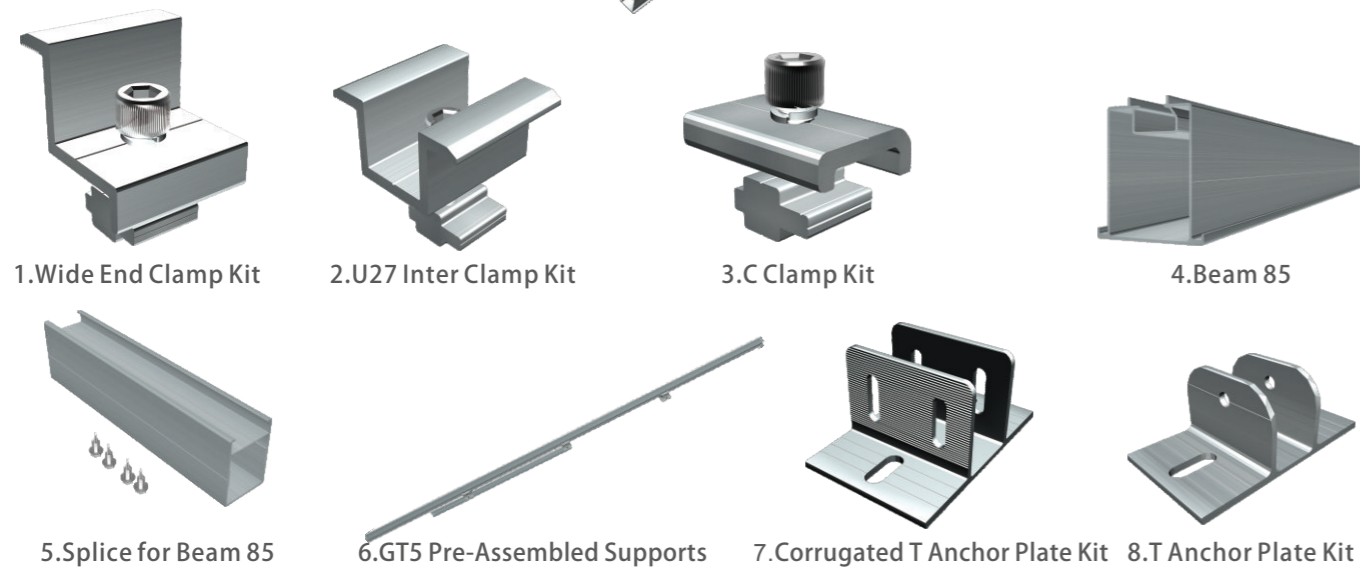
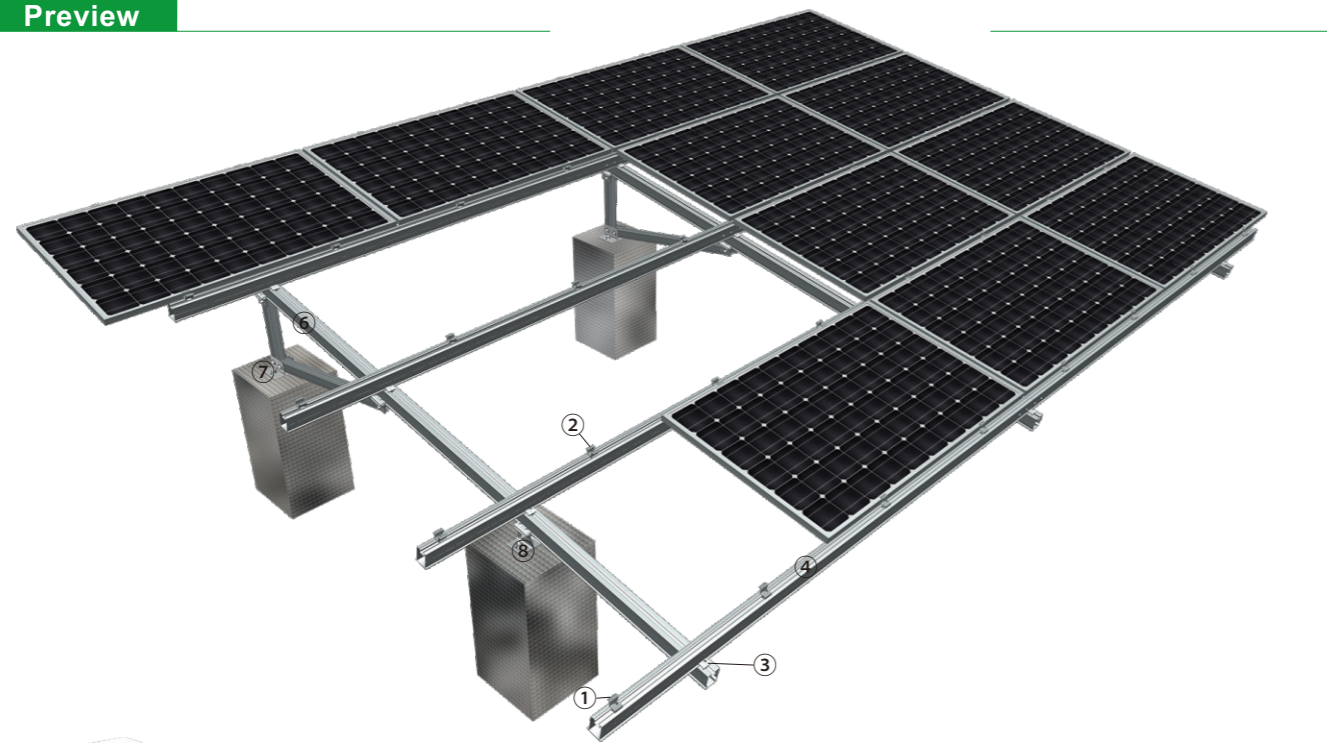
Installation Site	Ground	Wind Load	60m/s
Foundation	Concrete Base or Ground Screw	Snow Load	1.6KN/M2
Tilt Angle	5-60°	Ground Clearance	500-2000mm
Applicable Module	Framed or Frameless	Module Orientation	Portrait or Landscape
Design Standard	AS/NZS 1170, DIN 1055, JIS C 8955: 2011 International Building Code: IBC 2009 California Building Code: CBC 2010		
Material	Aluminum Al6005-T5 (Anodized)	Color	Silver or Customized
Fastener	Stainless Steel SUS304	Warranty	10 Years
Small Components	Aluminum Al6005-T5 (Anodized)		

Advantages

1. GT V is fully pre-assembled due to simplified structure, which will further reduce installation time;
2. The adjustable anchor plates help to adjust the position of supports, especially when installed on concrete columns or ground screws;
3. If combiner boxes, inverters or back side supports are needed to be fastened to GT V, they will be installed directly on supports by T bolts without drilling on site;
4. The square tubes are conducive to improve the stability.

FXSOLAR Ground Terrace V

Preview



Component List

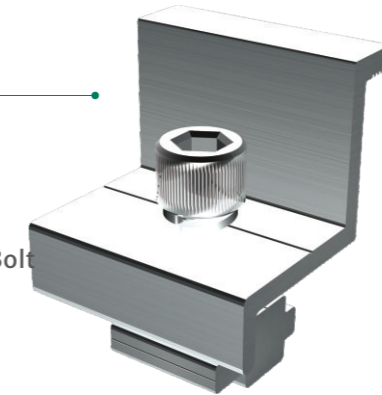
No.	Item	No.	Item	No.	Item
01	Wide End Clamp Kit	04	Beam 85	07	Corrugated T Anchor Plate Kit
02	U27 Inter Clamp Kit	05	Splice for Beam 85	08	T Anchor Plate Kit
03	C Clamp Kit	06	GT5 Pre-Assembled Supports		

FXSOLAR Ground Terrace V

Component Details

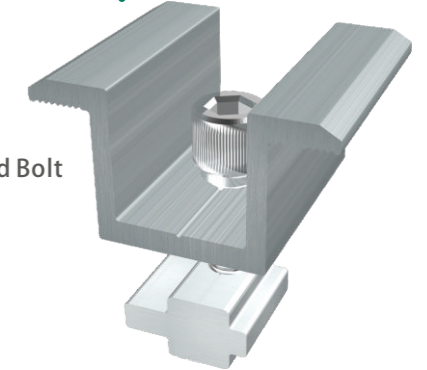
FX-BEC-ST Wide End Clamp Kit

Wide End Clamp
Cross Module
Spring Washer M8.4
Hexagon Socket Head Bolt



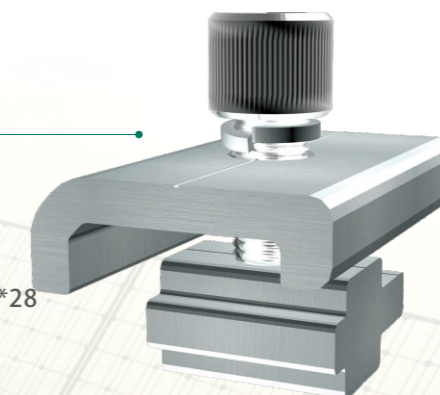
FX-IC-U27 U27 Inter Clamp Kit

U27 Inter Clamp
Cross Module
Spring Washer M8.4
Hexagon Socket Head Bolt
Washer M8



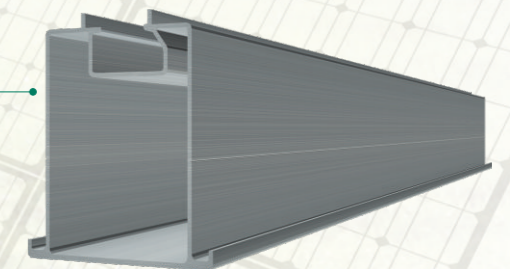
FX-CC-T C Clamp Kit

C Clamp
Cross Module
Spring Washer M8.4
Hexagon Socket Head Bolt M8*28



FX-R-85 Beam 85

Specification:
L*63.5*85/L*71*85
Standard Length:
3100, 4100, 5100mm



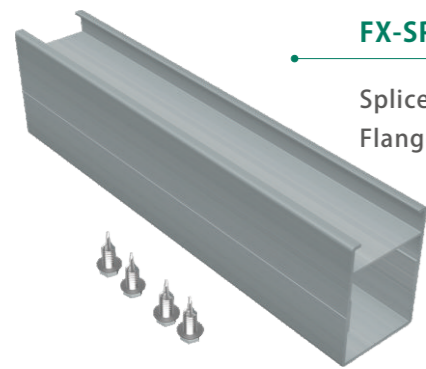
FXSOLAR Ground Terrace V

Component Details

FX-GT5-S GT5 Pre-Assembled Supports



Side Beam	GT5 Square Tube B	Hexagon Bolt M12*90
C Clamp 80	Washer M12.4	Spring Washer M8.4
Back T Joint	Spring Washer M12.4	Hexagon Socket Head Bolt
GT5 Square Tube A	Hexagon Nut M12	

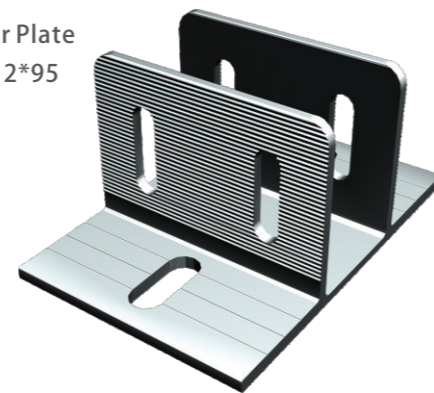


FX-SP-B85 Splice for Beam 85

Splice for Beam 85 L260mm
Flange Head Self-Tapping Screw ST6.3*19

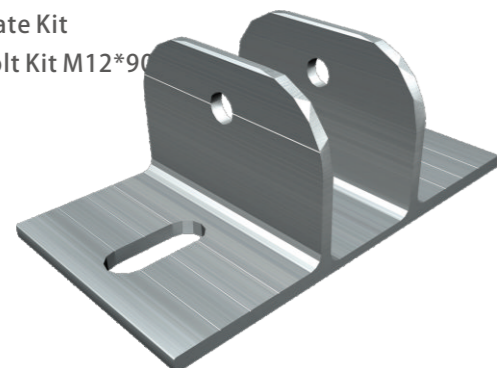
FX-GT5-TP Corrugated T Anchor Plate Kit

Corrugated Spacer
Corrugated T Anchor Plate
Hexagon Bolt Kit M12*95



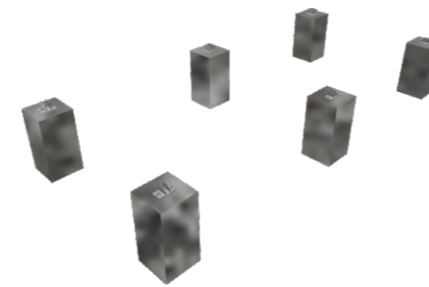
FX-GT5-T GT5 T Anchor Plate Kit

T Anchor Plate Kit
Hexagon Bolt Kit M12*90

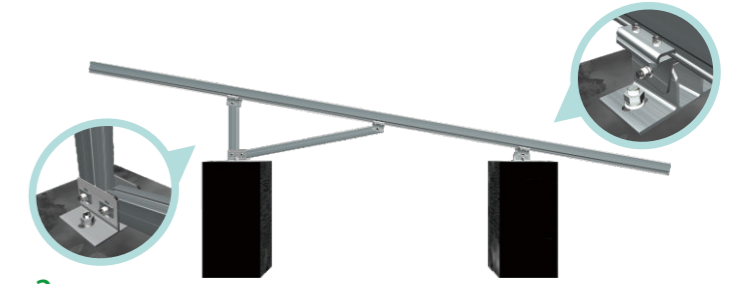


FXSOLAR Ground Terrace V

Installation Guide



1. Fasten Corrugated T Anchor Plates and T Anchor Plates onto embedded bolts on concrete bases



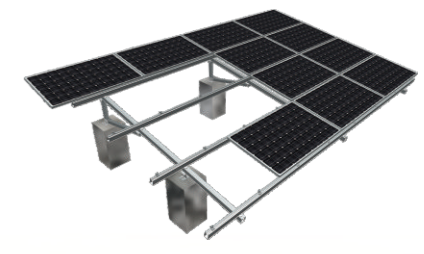
2. Fasten the T Jointer on the front of GT5 Pre-Assembled Supports to the T Anchor Plates; and fasten the Back Supports and the Inclined Support to the Corrugated T Anchor Plate



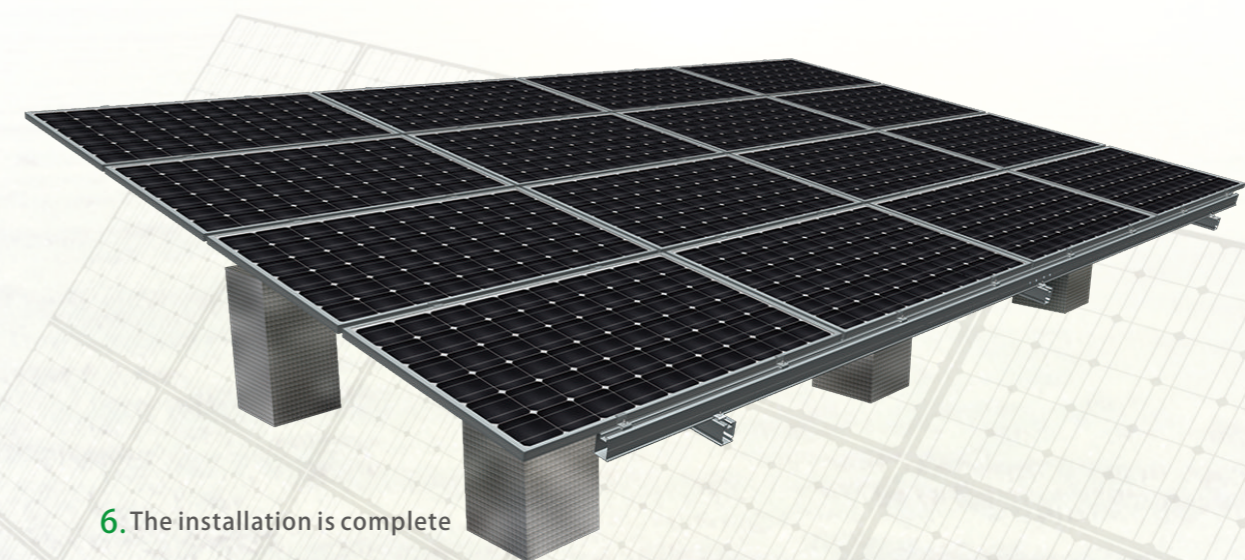
3. Install other Pre-Assembled Supports



4. Install Beams



5. Fasten solar PV modules by U27 Inter Clamp Kits and Wide End Clamp Kits



6. The installation is complete